

## Advocacy Day in Olympia

On March 18th, almost 40 individuals with disabilities and family members traveled down to Olympia with The Arc of Whatcom County for Family Support Advocacy Day. We attended a briefing from The Arc of Washington on legislative issues impacting individuals with developmental disabilities and their families. We also met with our legislators and their staff, including Senator Ranker and Representative Lytton from the 40th district and Representatives Buys and Van Werven from the 42nd district. We got to make new friends with representatives from People First of Skagit County who accompanied us on the trip. The cherry trees were in bloom, and a wonderful time was had by all. Thanks to our legislators and their staff for speaking with us and to The Arc of Washington for providing the bus to take us to Olympia.

### Do you want to contact your Senator or Representative?

Call the toll-free HOTLINE at 1-800-562-6000 (TTY for Hearing Impaired: 1-800-635-9993). Callers to the Hotline can leave a brief message for their district legislators or for the Governor or Lt. Governor on issues of concern or on questions they may have about bills or laws. These messages are forwarded electronically to the appropriate individuals. When leaving a message with the Hotline, please be prepared to give your name and street address. Interpreter services are offered for non-English speaking callers.



*"The legislators had time for us. We really got to meet them and find out they are real people, too."*



*"It was a great experience. We had more time with legislators face to face than in previous visits. They really took the time to sit down, listen and know more about the issues we face."*



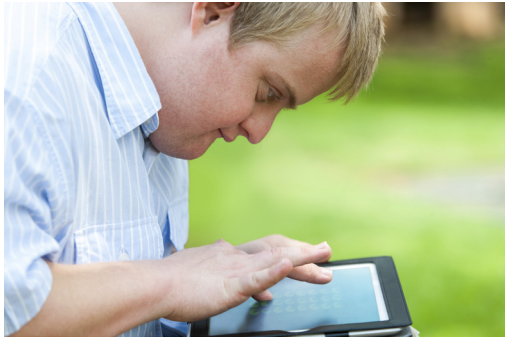
*"We are the power. We vote for our representatives. Find ways to repeat your concerns, send letters and make phone calls to let them know our needs continue."*



*"I felt like our voices were heard."*



*"Personal stories make a big impact. Make sure your voice is heard!"*



## What is Assistive Technology?

*"...any item, piece of equipment, or product...whether acquired commercially, something modified, or custom made...that is used to increase, maintain, and/or improve...the functional capability of individuals...with disabilities." - IDEA '97 and ADA*

Assistive Technologies (AT) have traditionally been considered for, and used by, individuals with 'complex' or 'significant' disabilities, such as those who are deaf/hard of hearing or blind/low vision and those with physical or developmental disabilities. However, we now know that when "assistive" tools and adaptations are made widely available to all in general environments, many individuals (not just those with disabilities) can benefit. This concept is related to 'Universal Design' which strives to make environments accessible to all users. For example, think about the following:

- Curb cuts are required by law in order to make public sidewalks and road intersections accessible to individuals with physical disabilities. However, many others benefit, including bicyclists and parents with strollers. Indeed, most of us choose to use the curb cuts for easier passage and more secure footing.
- Closed Captioning is now required in the manufacture of all televisions in order to ensure accessibility for individuals who are deaf or hard of hearing. However, it is now frequently also used for general benefit in public spaces including airports, sports bars, gyms and more.

Primarily as a result of technology advancement, Assistive Technologies are now available and affordable to meet the diverse needs of a wide range of individuals in our society, not just those with significant disabilities, including:

- Individuals with more frequently occurring disabilities, including learning disabilities, attention deficits, behavioral challenges, etc.
- Those who are new to English (English language learners)
- People with chronic health conditions
- Young children and 'elders' in our society
- Other individuals in the general population.

Source: <https://wce.wvu.edu/e-atrc/about-assistive-technology>

## The Ershig Assistive Technology Resource Center

The Ershig Assistive Technology Resource Center (E-ATRC) is a hands-on lending library and demonstration center, located in Woodring College of Education on the campus of Western Washington University (WWU), that houses hundreds of support technology tools that are available for perusal and check-out.

The Center's purpose is to increase awareness and use of assistive technologies in order to improve participation in life and increase access to learning for a wide range of individuals with diverse needs, as well as to enable professionals and families in Northwest Washington to use technologies to meet the needs of individuals with whom they work and live.

Assistive Technologies (AT) have historically been considered for individuals with complex disabilities. However, affordable AT options are now available to help meet the diverse needs of a wide range of individuals in our society, not just those with significant disabilities. The E-ATRC houses approximately 1,000 tools and other materials that are intended to exemplify the types of items that can provide 'life and learning' support to individuals with diverse needs.

The items displayed on the E-ATRC shelves and listed in their online catalog are available for check-out by anyone who comes to the E-ATRC on the WWU campus to access their resources.

For more information about the Center, email Linda Schleef at [Linda.Schleef@wwu.edu](mailto:Linda.Schleef@wwu.edu), call (360) 650-2783 or visit <https://wce.wvu.edu/e-atrc/ershig-assistive-technology-resource-center>



**E-ATRC**



## Looking Ahead, Expanding Choices for People with Developmental Disabilities in Washington State

A Developmental Disabilities Life Opportunities Trust (also known as the DD Endowment Trust Fund or DDLOT) allows individuals with developmental disabilities or their families to set aside funds for future use without affecting their eligibility for government services and benefits. Funds can be withdrawn from the trust and used for many services not covered by other benefits, including recreation, therapy, clothing and transportation.

### The Developmental Disabilities Life Opportunities Trust (DDLOT):

- Administrators understand the needs of people with developmental disabilities.
- Low cost to establish and maintain.
- Offers incentives in the form of state matching funds on fees for the individual trust accounts provided by the legislature.
- Funds are conservatively invested and safely managed by the Washington State Investment Board.

### Trust Benefits:

- Protects an individual's eligibility for government benefits, regardless of their trust value.
- Funds withdrawn from the trust can be utilized to enhance the quality of life for the individual.
- If levels of benefits and supports currently provided are reduced, individuals will have funds to purchase those needed services and supports in the future.
- Brings peace of mind to families planning for the future of their loved one who has a developmental disability.

*For more information, visit <http://ddlot.org/> or call 888-754-8798.*

## New Rules for Home and Community-Based Services (HCBS) Settings

The recent Medicaid rules establish requirements for settings that are eligible for reimbursement for Medicaid home and community-based services (HCBS). The Center for Medicare and Medicaid (CMS) is moving away from defining home and community-based settings by "what they are not" and now defines them by the nature and quality of individuals' experiences. The final rule requires that all home and community-based settings meet certain qualifications. These include:

- The setting is integrated in and supports full access to the greater community;
- Is selected by the individual from among setting options;
- Ensures individual rights of privacy, dignity and respect, and freedom from coercion and restraint;
- Optimizes autonomy and independence in making life choices; and
- Facilitates choice regarding services and who provides them.

For provider-owned or controlled home and community-based residential settings:

- The individual has a lease or other legally enforceable agreement providing similar protections;
- The individual has privacy including lockable doors, choice of roommates and freedom to furnish/decorate;
- The individual controls his/her own schedule including access to food at any time;
- The individual can have visitors at any time; and
- The setting is physically accessible.

The final rule excludes certain settings including nursing facilities, institutions for mental disease, intermediate care facilities for individuals with intellectual disabilities, and hospitals. Other Medicaid funding authorities support services provided in these institutional settings. It also identifies other settings that are presumed to have institutional qualities including those in a facility that provides inpatient treatment; on the grounds of, or immediately adjacent to, a public institution; or that have the effect of isolating individuals from the broader community.

*Read the complete document: [www.medicaid.gov/medicaid-chip-program-information/by-topics/long-term-services-and-supports/home-and-community-based-services/downloads/hcbs-setting-fact-sheet.pdf](http://www.medicaid.gov/medicaid-chip-program-information/by-topics/long-term-services-and-supports/home-and-community-based-services/downloads/hcbs-setting-fact-sheet.pdf)*

# Community Events



## ASK THE ADVOCATE WORKSHOP

### Advance Care Planning 6-8pm, Tuesday, April 21

The Arc's Dan Godwin Community Center  
2602 McLeod Road, Bellingham



At this workshop, participants will learn:

- Why Advance Care Planning is important for everyone.
- How to choose someone to be your Durable Power of Attorney for Health Care (your Health Care Agent).
- How to talk to loved ones and doctors about preferences for end-of-life care.
- How to complete & file Advance Directive paperwork.

This workshop is presented by staff and trained volunteers through the Whatcom Alliance for Health Advancement. Please RSVP: 360-715-0170, ext. 303, monicab@arcwhatcom.org. Supervised care for family members is available if you RSVP by April 16th.

## More Than Words Workshop

This summer, Western Washington University is offering a More Than Words Workshop to parents of preschool children who have recently been diagnosed with autism. More Than Words starts June 24 and ends July 22 with five once-a-week evening meetings and three additional meetings in the fall. The children must be enrolled in Western's Clinic for the parents to take the workshop, and the program continues in the clinic until the end of the academic year.

Please contact Dr. Eva Baharav at (360) 650-3157 or email [eva.baharav@wwu.edu](mailto:eva.baharav@wwu.edu) with questions about the workshop & program.



Seattle Children's  
HOSPITAL · RESEARCH · FOUNDATION

## Autism 200 Series

Autism 200 is a series of free classes for parents and caregivers of children with autism sponsored by Seattle Children's Autism Center. **You must RSVP in advance.** Contact Jessica: [jessicaburchiel@gmail.com](mailto:jessicaburchiel@gmail.com).

### Autism 204: A Visit to the Dentist - Promoting Oral Care

7:00pm-8:30pm, Thursday, April 16  
Instructor: Travis Nelson, DDS, MSD, MPH

Western Washington University Speech-Language Clinic  
AIC Building, 516 High Street, Bellingham

[www.seattlechildrens.org/clinics-programs/autism-center/resources](http://www.seattlechildrens.org/clinics-programs/autism-center/resources)



## Community Engagement Meeting to Discuss Health Care Access for People with Disabilities

Monday, April 6th, 11:30am-3pm  
Bellingham Public Library  
210 Central Ave, Bellingham



Discuss barriers to accessing health care, explore perception of health care professionals, and examine city infrastructure and transportation needs.

Lunch will be provided. Registration is required: (360) 393-3890. Email [lindar@cfinorth.org](mailto:lindar@cfinorth.org) to request sign language accommodation.

## P2P Sibshop for Young Siblings

Saturday, April 11th, 1-3pm  
Whatcom Center for Early Learning  
2001 H Street, Bellingham



This sibshop is offered for siblings ages 5-8. Sibshops are a support program for children who are a sibling of a child who has special needs. Please call (360) 255-2056 ext. 1 to register your child by April 8th.



## 2015 Season Kicks Off Soon!

TOPSoccer is an adaptive soccer program for children with physical and/or developmental disabilities ages 4 and up. The Whatcom County Youth Soccer Association partners with Chuckanut Health Foundation to provide this program at no cost to participants.

Register online: <http://www.washingtonyouthsoccer.org/programs/topsoccer/>. For additional information, contact Lance Calloway: [Lance@whatcomsoccer.com](mailto:Lance@whatcomsoccer.com) or (360) 676-1919, ext 104.

## Please note date change for Young Adult Self-Advocacy

Saturday, April 11th, 10am-12pm  
The Arc's Dan Godwin Community Center  
2602 McLeod Road, Bellingham

For more info, contact Jessika: (360) 715-0170, ext. 304.

## Fostering Independence Workshop

Wednesday, April 8, 6-8pm

St. Luke's Community Health Education Center: 3333 Squalicum Parkway, Bellingham

Young adults with disabilities often have fewer opportunities than their non-disabled peers to make choices and decisions. Identifying ways to increase those opportunities at home and in the community can be critical to an individual's long term success. Research has shown that an individual's ability to express preferences, make choices and shape their own future has a positive impact on their quality of life.

**Who should attend?** Individuals with developmental disabilities, their parents, siblings and caregivers.

**Presenters:** Cathy Murahashi, Parent Advocate, The Arc of King County; and her son, David Murahashi

Two parallel sessions will be hosted: one for parents and caregivers and one for individuals with DD and their siblings. Topics to be discussed include: partnering for goal setting, identifying opportunities for decision-making, building problem-solving and self-advocacy skills, and the role of disability awareness. Light refreshments will be provided.

*The workshop is free, but registration is appreciated. Contact Vicki McClure at (360) 676-6724, ext. 32243, or vmcclure@whatcomcounty.us. This event is in an accessible location. For accommodations, please call 5 business days in advance: (360) 676-6724, ext. 32014.*

### Developmental Disabilities Council Recruiting Now for Vacant Positions

*The Washington State Developmental Disabilities (DD) Council ensures that people with DD receive the support and services necessary to enable them to achieve their maximum potential. The Council develops policy recommendations, which promote the values of self-determination, independence, inclusion, integration and productivity for people with DD.*

The Council encourages anyone who is interested to apply. Council membership includes self-advocates and family members and represents the wide cultural and geographical diversity of our state. Selected council members will hold a three-year term and are eligible for reappointment for a second term. The Council covers all expenses, including travel to meetings, meals and lodging.

To apply, go to the Governor's website at <http://www.governor.wa.gov/boards-commissions/board-and-commissions/apply-serve-board-or-commission-0> and click on apply.

The application deadline is April 30th. For more information, contact Linda West at (800) 634-4473 or [linda.west@ddc.wa.gov](mailto:linda.west@ddc.wa.gov).



**COMMUNITY  
SUMMIT**  
WENATCHEE 2015  
*Exceed the Possible!*

Registration is now open for the Third Annual  
**Community Summit:  
"Exceed the Possible"**

June 16-18, 2015  
Wenatchee Convention Center  
121 N. Wenatchee Ave, Wenatchee, WA

The Summit will offer a series of national and local presenters. The three sessions are: Imagine, Engage & Empower; Local & Global; and Making It Happen!

The opening keynote speaker is Victoria Castle, an international speaker, trainer, humorist, and author of *The Trance of Scarcity* which addresses our cultural predisposition to "not enough-ness". As an Embodiment coach, she works with teams and leaders to bring forth the best in themselves and others. Victoria is known for her practicality and sense of humor.

*For more information and to register, visit <http://www.communitysummit.ws/> or call (206) 388-6307.*



### "Redefining Life" Art Show

8:30am-5pm, Monday-Friday, April 3 to June 5

St. Joseph Medical Center for Physical  
Rehabilitation, 809 E Chestnut St

The public is invited to view a showcase of creative expression and original art from artists who have disabling conditions. Entrance is free!

*For more info, call (360) 788-6494 or email [hludwig@peacehealth.org](mailto:hludwig@peacehealth.org).*

### Autism Outreach Project

Upcoming workshop offered in Bellingham via teleconference:

Friday, April 10th: Supporting the Emerging Self-Advocate with Autism

*Single-day courses are \$90 for professionals and \$30 for parents of children with autism spectrum disorder. For more information or to register, visit: <https://www.nwescd.org/aop/training> or call (888) 704-9633.*



# Programs & People

## SUMMER CAMPS AND PROGRAMS

Spring is here, and it's time to start thinking about summer camps. Some fill up fast, so be sure to register soon!

### CAMP FIRE, SPECIAL FAMILY WEEKEND

PROGRAM DATES: May 23-25, 2015

REGISTRATION DEADLINE: May 7th

COST: Tiered Pricing, \$50-\$125 per person

Special Family Weekend is a fabulous opportunity for families with kids with special needs to experience the outdoors in an inclusive, supportive environment. Families stay in cabins, enjoy delicious meals, and spend the weekend doing all of your favorite camp activities, including archery, boating, fishing, outdoor games, hikes, crafts and more! A variety of adaptive bikes are provided by the Outdoors for All Foundation, so children of all ability levels will find a bike they can take out for a spin.

To register, visit <http://campfireseattle.org/event/special-family-weekend/> or call (206) 463-3174, ext 35.



### CAMP TEAM (Together Everyone Achieves More)

PROGRAM DATES: Thursday, May 7, 12:30pm - Friday, May 8, 4pm

APPLICATION DEADLINE: April 17th

COST: \$35

Don't miss out on the 13th annual overnight event at Camp TEAM! This camp is an excellent way to meet new people and build ties between community members of Skagit and Whatcom counties. Participants, ages 16 and older, will have the chance to play games, do arts and crafts, go on nature walks, sit around a bonfire, eat s'mores, build relationships, and have a blast! Western Washington University Recreation Program students will be your energetic co-campers and counselors. The cost of the overnight includes transportation to and from camp, food and lodging. The event is held at our new location, Warm Beach Camp and Conference Center near Stanwood. If you require individual assistance, your personal care assistant can attend for free.

For more information, call Amanda at (360) 778-7000. To register, visit [www.cob.org/ezreg](http://www.cob.org/ezreg) or call 778-7000.



### RAY OF HOPE

PROGRAM DATES: June 29th - August 13th, Monday-Friday, 9am-3pm

APPLICATION DEADLINE: May 13th

COST: \$1200 per child for the entire summer

Ray of Hope Summer Day Program is a seven week program for children ages 5-12 with emotional, behavioral, and/or economic challenges. It is a day program unlike any other offering arts and crafts, recreation, field trips, and artistic enrichment. Ray of Hope strives to introduce empowering social skills and inspiring life principles through story and relationship. Ray of Hope is for the kids who most need, yet seldom experience, such a holistic, well staffed, and fun summer.

For more information or to apply, call (360) 714-0700.



### FACES NORTHWEST

PROGRAM DATES: July 6th - August 20th

APPLICATION DEADLINE: Apply now - space is limited

COST: Contact FACES for details

FACES is dedicated to working in partnership with families helping children, adolescents, and those transitioning into adulthood with autism maximize their strengths with the support and tools they need in order to grow socially, academically, and to be active participants in their community. FACES achieves its mission by operating a summer program that provides community involvement, independent living skills, academic enrichment and positive social relationships. The program is specifically for school aged children through young adults with autism. It is a therapeutic recreational day program that operates for four days a weeks, six hours a day. Utilizing evidence-based strategies, the program includes: one-on-one instruction of new skills and therapy, access to therapeutic activities and the community, and inclusion of peer mentors to model social skills to the children with autism.

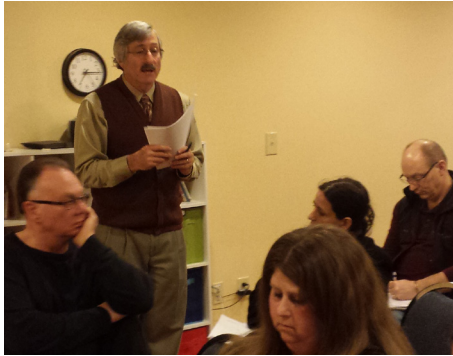
For more information, call Karlene at (360) 389-2151 or e-mail [facesnw@hotmail.com](mailto:facesnw@hotmail.com).



### CENTER FOR CHILDREN WITH SPECIAL NEEDS CAMP DIRECTORY

The Center has a searchable camp directory available at [www.cshcn.org](http://www.cshcn.org). You can search by type of camp, special needs considerations, camp location, and desired month. A printable version of the 2015 camp directory (PDF) is also available at <http://cshcn.org/sites/default/files/webfm/file/SummerCampDirectory2015.pdf>. You can also call (866) 987-2500.

## SUPPORT TO SENIOR FAMILIES



Thank you to Barry Meyers for presenting on Special Needs Trusts at our Parent Coalition workshop in February

Ageing parents, with increasing need for support themselves, are still taking care of their grown developmentally disabled children. But what happens when aging impacts our continued care for adult children with special needs?

It is important to recognize that the majority of individuals with DD in Washington live with their families. In one quarter of these households, the primary caregiver is age 60 or older. Over the next twenty years, there will be a considerable increase in the number of two-generation elderly families living together where parents who are age 80 or older are caring for a son or daughter age

60 or more having a developmental disability. The demands of caregiving create complex problems for families such as barriers to their retirement and the loss of social life. Additionally, parental roles change as people age due to retirement, illness, or death. Parents report needing guidance on how to cope with these concerns and plan for the end of their caregiver role.

Advance planning can help alleviate some of the stress and anxiety of the transition from one living arrangement to another. Planning can be complex because of the diverse set of needs that must be addressed once the parent, sibling, or other natural support is no longer able to assist the person with I/DD. Parents need information to help them understand the implications of their actions on the well-being of the child with I/DD. For example, a direct inheritance could negatively impact the child's continued receipt of Medicaid. Involving siblings in planning, whenever possible, is important since their insights about their brother or sister and potential resources within the extended family greatly enhance person-centered, future-oriented planning.

The Arc of Whatcom County works with families in identifying supports needed to plan for the future of their loved ones. Our Future Planning Guide contains information on financial planning to preserve government benefits as well as legal information on power of attorney and guardianship. To find a copy of the Future Planning Guide, visit [www.arcwhatcom.org](http://www.arcwhatcom.org) and click on Resources.

## The Parent Coalition

The Arc of Whatcom County provides leadership support for individuals with developmental disabilities and their parents/guardians. The goal of the Parent Coalition is to enable persons with developmental disabilities and their parents/guardians to become effective and involved in accessing services.

The Parent Coalition newsletter is published monthly by:

### The Arc of Whatcom County

Dan Godwin Community Center  
2602 McLeod Road  
Bellingham, WA 98225  
(360) 715-0170  
[www.arcwhatcom.org](http://www.arcwhatcom.org)  
OFFICE HOURS: 9am-12pm M-F

### Newsletter Production Staff:

Christine Stone, Monica Burke,  
Sonja Hellinga, Olivia Murguia,  
Mt. Baker High School students and volunteers

Executive Director: Beverly Porter  
Office Manager: Christine Stone  
Program Director: Monica Burke  
DsO & YASA: Jessika Houston

### Board of Directors

Missy Bartel, President  
Todd Childs, Vice President  
Susan Radke, Secretary  
Katie Edson, Dale Whipple,  
Bobbie Wiley and Leon Kinsley

## Stay Connected

### Online Community Calendar:

Visit The Arc's website at [www.arcwhatcom.org](http://www.arcwhatcom.org) and click on Events.

**Facebook:** Visit our FB page: [www.facebook.com/ArcWhatcom](http://www.facebook.com/ArcWhatcom) for the latest information and events.

**E-alerts:** The Parent Coalition emails updates on legislation, workshops and upcoming activities. To sign up, visit [www.arcwhatcom.org](http://www.arcwhatcom.org) or email [monicab@arcwhatcom.org](mailto:monicab@arcwhatcom.org)



The Parent Coalition is funded by grants from the Developmental Disabilities Program of Whatcom County, the United Way and your generous donations.

THE 7th ANNUAL AUTISM AWARENESS AUCTION BENEFITTING

*Aloha*

**Auction & Dinner**

Saturday, May 2, 2015

Bellingham Golf & Country Club

Doors open at 5:30pm



Tickets are \$75 each  
Includes Hawaiian dinner and  
complimentary beer and wine

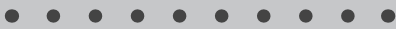
Order your tickets today!  
[www.facesnorthwest.com](http://www.facesnorthwest.com)  
Reserve your tickets by April 18

FACES Northwest is a non-profit organization founded by parents of individuals with autism. Since 1997, FACES has operated the ONLY local summer program providing education, recreation and one-on-one support for children and young adults with autism.

(360) 389-2151 • P.O. Box 30943, Bellingham, WA 98228

## IN THIS ISSUE

- Page 1: Advocacy Day in Olympia
- Page 2: Assistive Technology
- Page 3: Expanding Choices for People with DD
- Page 4: Community Events
- Page 5: Community Events Cont'd
- Page 6: Summer Camps
- Page 7: Supporting Senior Families



### DID YOU KNOW?

Bellingham Parks & Recreation offers inclusion support for individuals with disabilities wishing to participate in any program offered by Bellingham Parks & Rec. Call Amanda at 778-7000 (778-7011 TDD) at least two weeks prior to the registration deadline. Staff can assist in obtaining special equipment, interpretive services, or other support necessary to make your involvement successful.



The Arc of Whatcom County  
Dan Godwin Community Center  
2602 McLeod Road  
Bellingham, WA 98225

Nonprofit Org.  
U.S. Postage  
PAID  
Bellingham, WA  
Permit No. 124

# Event Calendar

## April 2015

**6 Monday, 11:30am-3pm**  
**Community Engagement Meeting for Health Care Access**  
*(see page 4 for details)*

**10 Friday, 12-1:30pm**  
**Autism Support Group**  
The Arc's Dan Godwin Community Center  
2602 McLeod Road  
Contact Monica: 715-0170, ext 303

**11 Saturday, 10am-12pm** *(Note date change!)*  
**Young Adult Self-Advocacy**  
The Arc's Dan Godwin Community Center  
2602 McLeod Road  
Contact Jessika: 715-0170, ext 304

**11 Saturday, 1-3pm**  
**P2P Sibshop for Young Siblings**  
*(see page 4 for details)*

**13 Monday, 7-8:30pm**  
**Parent to Parent Support Meeting**  
WCEL, 2001 H St  
Contact Christine: 255-2056, ext 1

**16 Thursday, 11:30am-1pm**  
**SEPA Meeting**  
Bellingham Public Schools District Office  
1306 Dupont Street, Room 212  
Contact Special Education: 360-676-6458

**16 Thursday, 5:30-7pm**  
**DsO Spring Fling Planning Meeting**  
The Arc's Dan Godwin Community Center  
2602 McLeod Road  
Contact Jessika: 715-0170, ext 304

**16 Thursday, 7-8:30pm**  
**Autism 204: A Visit to the Dentist**  
*(see page 4 for details)*

**18 Saturday, 6-7pm**  
**People First Meeting**  
114 W Magnolia, Suite 106  
Contact Susan: 738-2060

**20 Monday, 6-8pm**  
**Spin Dance**  
Senior Center, 315 Halleck Street  
Contact Amanda: 778-7000

**21 Tuesday, 6-8pm**  
**PC Workshop: Advance Care Planning**  
The Arc's Dan Godwin Community Center  
2602 McLeod Road  
Contact Monica: 715-0170, ext 303

**22 Wednesday, 5:30-6:30pm**  
**The Arc's Board of Directors Meeting**  
The Arc's Dan Godwin Community Center  
2602 McLeod Road  
Contact Beverly: 715-0170, ext 306

## SAVE THE DATES!

### **The Arc of Whatcom County's Annual Membership Meeting**

**Wednesday, May 13, 5-7pm**  
Bloedel Donovan Park Multipurpose Building

Come learn about the latest happenings at The Arc, renew your membership and vote on new board members. Everyone is welcome!

For more information, contact Christine at [christines@arcwhatcom.org](mailto:christines@arcwhatcom.org) or (360) 715-0170, ext. 305.

### **Down syndrome Outreach Spring Fling**

**Sunday, May 17, 12-3pm**  
Fairhaven Park Pavilion

Meet new families, reconnect with friends, and enjoy a wonderful afternoon, rain or shine!

For more information, contact Jessika at [jessikah@arcwhatcom.com](mailto:jessikah@arcwhatcom.com) or (360) 715-0170, ext. 304.

**NOTE: All listed events are in Bellingham unless otherwise noted.**